

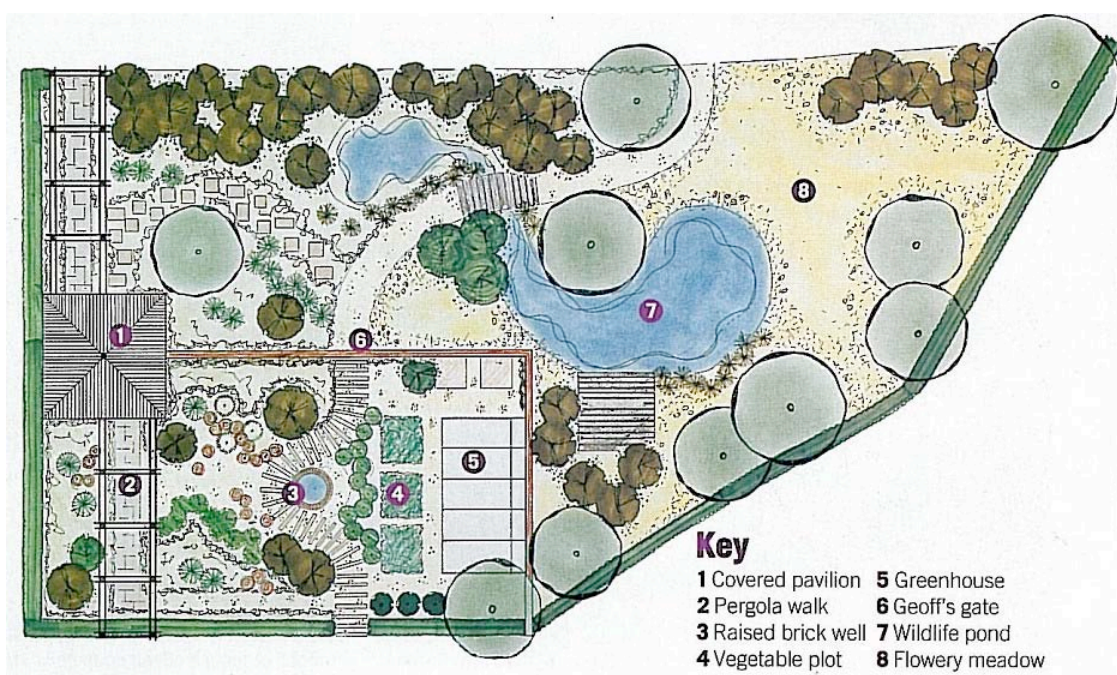
THE PARADISE GARDEN

The late Geoff Hamilton was much loved and watched by millions each week on BBC Gardeners' World. The Paradise Garden is Garden Organic's tribute to a great gardener. The garden incorporates all the basic organic principles which harness the natural cycles and processes that promote healthy plant growth.

Isabelle van Groeningen and Gabriella Pape designed the garden. The design cleverly linked together themes from Geoff's last television series, "Paradise Gardens" dividing the Town garden with its formal structure and sweeping path encircling a raised brick well, with the softer natural style of the Country Garden. As keen organic gardeners the designers knew it must embrace Geoff's gardening philosophy and environmental concerns, while reflecting the down to earth values for which he was known. The design couldn't be too flamboyant but had to stimulate the senses and provide the beauty and sense of escape that Geoff captured in his Paradise gardens.



The garden is split into 2 parts.



The Town Garden

This is quite formal with many structures including a handsome dry stone wall (which is an ideal habitat for invertebrates), the brick wall with an arch gateway and the pergola and pavilion made from green oak. An Alitex glasshouse houses more tender plants.

As well as reflecting Geoff Hamilton's style and colour schemes, the garden also illustrates Garden Organic's concern for the natural environment in landscape design and construction. At first glance not all the environmental features are evident. The roof tiles of the pavilion (and vegetable plot edging) are made from recycled polystyrene. Rainwater is collected from this roof and recycled into the wishing well at the centre of the garden. Compost bins in the corner near the glasshouse recycle garden waste.

The Country Garden

This is more informal in contrast, with a wildflower meadow and a natural pond. This garden merges gently into the natural vegetation beyond, connecting the garden to the wider countryside. The hedge containing native species such as Field Maple, Holly, Beech, Hornbeam, Whitebeam and Dog rose was laid in the traditional style in December 2004 and continues to be a valuable habitat for a variety of wildlife.



The bridge and platform are made from green oak with supports made from recycled polystyrene to prevent rotting.

All the gates within the garden were kindly donated by Linda Hamilton, most of them originally having been made for the gardens at Barnsdale.

Planting

Several plants have been named after Geoff and the Paradise Garden contains 3.

- Sweet pea "Geoff Hamilton" – bred by Diana Sewell, this is pinkish purple in colour and has plenty of perfume
- Penstemons – is a deep raspberry red with white markings in its throat bred by Clive and Kathy Gandley
- Old fashioned rose bred by David Austen Roses

Further information

Copies of Garden Organic's "Organic Guidelines" are available in the shop

Garden Organic Fact Sheets

GS3 Green manures

GS4 Managing your soil

GS55 Water in the organic garden

GG30 Creating a wildflower meadow

GG40 Flowers for a wildlife garden

GG42 Shrubs and climbers for a wildlife garden

GG43 Trees for a wildlife garden

GG44 Attracting beneficial insects

PLEASE RETURN THE SHEET TO THE HOLDER ONCE YOU HAVE FINISHED WITH IT

